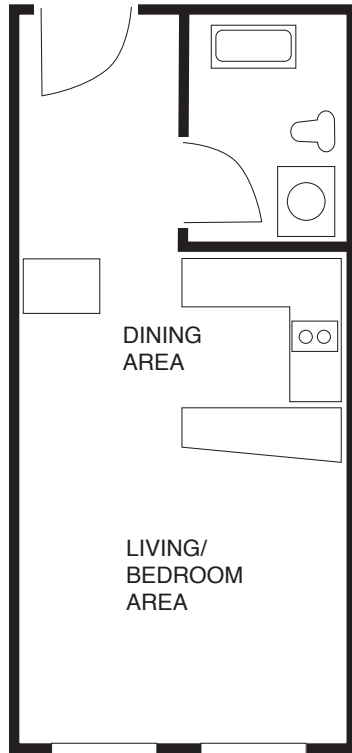


379 MAIN STREET RESIDENCE

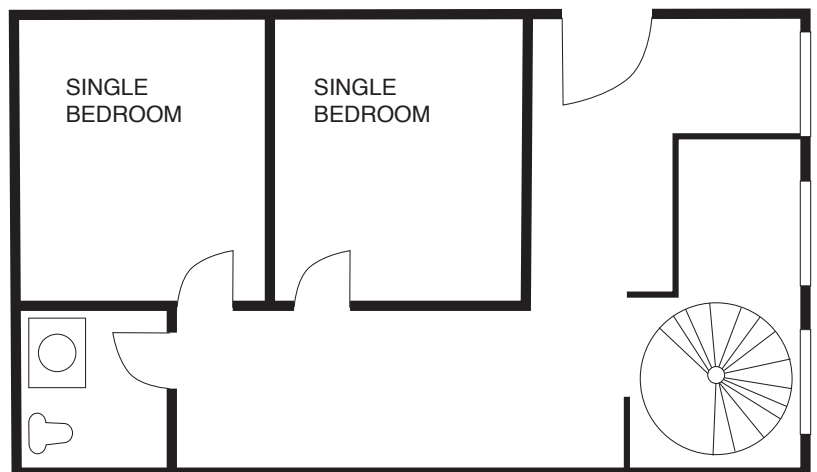
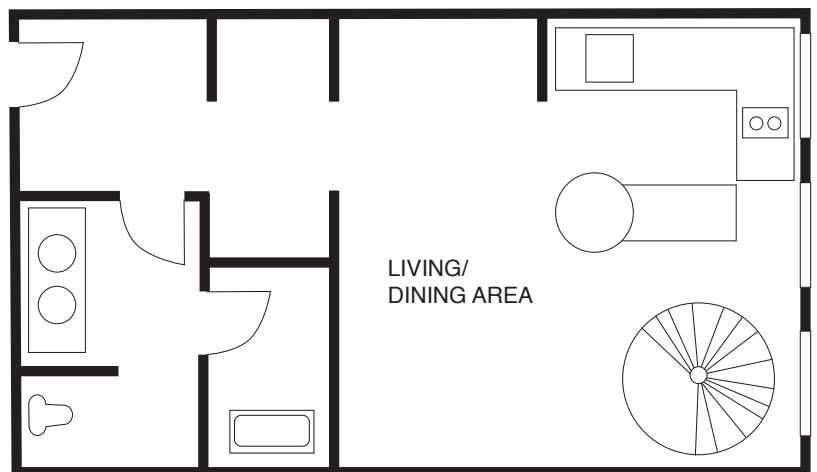
379 MAIN STREET, Worcester, MA | Studios and 2 bedroom townhouses

REPRESENTATIVE FLOOR PLANS



STUDIO
\$1,050/per month*
2019-2020 academic year

2 FLOOR TOWNHOUSE
\$925/per month*
2019-2020 academic year



*Pricing is per person